



## ONE STOP DESIGN & BUILD COMPANY

OFFERING EXPERT SOLUTIONS FOR ALL KINDS OF TURNKEY ENGINEERING CONTRACTS

### IN-HOUSE FACILITIES

- STEEL / ALUMINIUM / GLAZING FACTORY
- FOUNDATION ENGINEERING WING
- PLANT & MACHINERY WING

- REBAR CUT & BEND FACTORY
- ELECTRO MECHANICAL WING
- DESIGN & ENGINEERING WING



### FUJSENG CONSTRUCTION LLC

#### Corporate Office

502-Fujairah Tower  
Hamad Bin Abdullah Road  
P.O.Box 7226 Fujairah (UAE)

Tel.: +9719 224 4388  
Fax : +9719 224 4399  
e-mail: fujiseng@emirates.net.ae

#### Operations Headquarter & Factories

Al Hayl Industrial Area-1  
P.O.Box 7226  
(UAE)Fujairah

Tel.: +9719 223 9190  
Fax : +9719 223 9193  
e-mail: aluminum@fujiseng.ae



# FujEng

Building  
dreams



## CONTENTS

Our Goal	1	• Fujairah Hospital, Royal block	26
FujSeng Construction LLC, Organization	2	• G+M+11 Commercial Project	27
Corporate office of FujSeng Construction LLC	3	<b>Residential Projects :</b>	
Operations headquarter of FujSeng Construction LLC	5	• Reception block of Fujairah Palace	28
Facade Engineering Division & Factory	7	• Palace Villa Fujairah	29
Rebar Cut & Bend Division & Factory	8	• G+35 Residential Project	30
Plant, Machinery, Equipment Department ( P.M.E.)	9	• G+7 Residential Project	31
Mechanical, Electrical & Plumbing Department ( M.E.P.)	10	• G+15 Residential Project	32
FUJSENG CONSTRUCTION LLC. PROJECTS	12	<b>Industrial Projects :</b>	
<b>Infra-structural projects :</b>		• Under Pass Project, Al-Quarrah	33
• Pipe Rack Project	13	• Aluminium Factory	34
• Mina al Fajer infra-structure Project	15	• Cable Manufacturing Factory	35
• Storm Water Drainage Project (from Fujairah to Bidiya Town)	16	Commercial Licence	36
• Belt conveyor expansion Projects for port of Fujairah	17	Chamber of Commerce Registration	37
<b>Commercial Projects : Malls, Hotels &amp; Resorts :</b>		FujSeng Construction LLC, Organization Chart	38
• 3B+G+5 Mina Al Fajer Hotel (Fairmont)	19	Co-Curricular Activities at FujSeng Facilities	40
• Mina Al Fajer, Apartments blocks	22		
• B+G+1 Century Mall	23		
• K.M.Trading Show-room	24		
• G+M Showroom	25		



## OUR GOAL

- 🔗 Meet and exceed client expectations
- 🔗 Keep accidents and incidents to the practical minimal
- 🔗 Prevent pollution, conserve resources & safeguard public interest
- 🔗 Comply with applicable legal & other requirements
- 🔗 Continuously improve upon quality performance through a structured management system
- 🔗 Maintaining highest quality control standards
- 🔗 Continuously keeping our work force in touch with the technology by in-house training programs
- 🔗 Adopting the latest technology & work practices to achieve excellency
- 🔗 Committed to play an important role primarily in the developmental projects in the Emirate of Fujairah in the first instance
- 🔗 Achieve excellence in management of contracts and timely delivery of the same with highest Engineering standards besides Quality

We at Fugseng have an aim at continuously improving upon our Quality Management System and practices besides providing a safe and healthy working atmosphere / environment for all with a commitment to conserve resources and wastages at all stages, in order to achieve complete customer satisfaction at all stages of our growth

Fugseng Management.

## FUJSENG CONSTRUCTION ORGANIZATION

Established in the year 2006, Fujeng Construction LLC, is a Class A licensed company (unlimited category) duly registered in the Emirate of Fujairah. The company, within a short span of time, has grown into a self contained, multi-disciplined construction company, having in-house facilities for undertaking complete design & build turnkey Civil, M.E.P and Infrastructural Projects including Public Health Engineering Projects. The company has a full-fledged Projects, Facade Engineering, Steel Fabrication (Cut & Weld), M.E.P, Rebar (Cut & Bend) Divisions / Departments, including facilities to undertake in-house Piling, and ID Works etc.

The company is also backed by the support of some strategic tie-ups specializing in Pre-Engineered Steel manufacturing & erection, and similar arrangements are also in place for large Electrical Projects including 33 kVA Electrical Sub-stations and Public Health Engineering Projects including Water Resource projects and Sewerage & Drainage Projects.

Fuj seng Construction LLC possess the expertise in large turnkey Civil Engineering Projects like Tourist Resorts, Shopping Malls, Hotels, High Rise Buildings, , besides large - M.E.P Projects, Infrastructural Projects and other Construction Projects.





The corporate office of the company is in Fujairah Tower, located in the heart of the city. The corporate office is efficiently linked to the company's Operations Head-quarters and Project Sites through an E.R.P system.

◎ **G.M / Director's Office**

The management of Fugseng is headed by its G.M / Director, who is a qualified Civil Engineer & a Management Professional having 28 years of diversified experience in India, Japan, Oman & the UAE. Additionally this office also houses a Technical Coordinator and an Executive Secretary, effectively following up & coordinating with the Company's Clients, Projects and Divisions/Departments accordingly.

◎ **Finance Department**

The Finance department of headed by a qualified & experienced Chartered Accountant and is also managed by a team of well qualified & experienced accounts professionals, all having the relevant experience in Construction field and well trained on accounting in the company's ERP system / network.

◎ **Contracts & Planning Department**

The Contracts & Planning department is headed by a well qualified & experienced professional of the relevant field assisted by a dedicated team of well Qualified Quantity Surveyors & Planners. This department too is linked to the project sites through the ERP system / network.

◎ **Human Resources & Administration Department**

The Human Resources & Administration Department is managed by professionals having HR background who, other than dealing with administrative issues of the company, also conduct periodic training programs for employees as a part of the company's Human Resource Development Program. The HRA department also looks into and takes care of all support services for various Divisions & Project Sites including the Medical Facility through a separate Division named as Fugseng Facilities located at Al Hayl Industrial Area.

◎ **IT Wing**

Fugseng has a strong IT Wing managed by well qualified & experienced professionals who maintain the IT network / linkages and who also provide support services to all Departments & Divisions of the company. The necessary support & training services on the E.R.P system (Microsoft Dynamics AXAPTA) are also taken care of by the IT wing.





The Operations Head Quarter is located at Al-Hayl Industrial area, Fujairah and is spread over an area of around 15 acres. The complex has Residential Buildings, Factory Buildings, Central Warehouse, Fugseng Facilities (Logistics Department) and Plant, Machinery & Vehicles Department) including, a Scaffolding yard, Machinery yard, Rebar-Cut & Bend Yards, and Recreation Facilities.

A separate office building at the Operations HQ (Al-Hayl) also houses the following key Divisions & Departments of the Company;

### ■ Projects Department

Presently comprising of three Projects' execution units, these units are supported by a common design wing and is managed by qualified and experienced Senior Project Managers and a team of qualified and experienced Engineers, Designers, Surveyors and Draughtsmen.

### ■ M.E.P Department

Managed by qualified and experienced Project Managers and backed with a common design wing, the MEP department has a team of qualified/experienced Engineers, Designers, Supervisors & Draughtsmen.

The department provides Mechanical, Electrical and Plumbing (MEP) engineering services customized and tailored to the specific Project requirements including comprehensive Design works. The MEP department is known for its high quality, value addition, cost effectiveness and for time bound Services. The MEP team's expertise and depth of experience enables them complete even the most complicated and challenging HVAC, Electrical and Plumbing projects with ease following International standards and specifications.

The MEP department's working is completely process driven and result oriented with aim to improve and update the process and systems and to stay in tune with the latest technology.

### ■ Materials Department and Central Store/Warehouse

Fugseng's Materials department is also managed by well qualified & experienced team of professionals and the department is also linked effectively with the Head Office and all project sites through the company's ERP system / network.

The full-fladged Central Store / Warehouse Facility of Fugseng is also managed by a qualified & experienced materials team, who take care of the materials supplies to various Projects of the company in addition to the supply of company's Scaffolding Systems (including it's maintenance).





The company's strength lies in its well structured organizational set-up which is managed by experienced and qualified professionals. The company presently has 160 strong team of experienced Engineers & Professionals of diversified disciplines along with a workforce of around 1200 skilled & semi-skilled personnel from India, Pakistan, Bangladesh, Philippines, Egypt, Singapore, Malaysia & Nepal.

Facilities are in place in the above-mentioned countries to muster more work force in a short span of time.





## ❑ OPERATION HEAD QUARTER OF FUJSENG

### ■ Q.E.H.S DEPARTMENT

The QEHS department is managed by Qualified Professionals & field staff controlling the Quality, Environmental, Health and Safety aspects at various Divisions & Project sites of the company.

The QEHS department of Fugseng follows a stringent Policy on Quality, Environment, Health & Safety to ensure desired results at all the Project Sites and Divisional Set-ups of the company.

### ■ FUJSENG FACILITIES DIVISION

Managed by qualified and experienced professionals, Fugseng Facilities presently has the capacity to handle around 3,000 personnel and the company's Plant, Machinery and Vehicle fleet through its two departments i.e.

The Logistics Department maintains & manages the following in a systematic manner;

- ✓ Work-force and deployment thereof to the various project sites
- ✓ Residential Accommodation Facility
- ✓ Recreational facilities for workers
- ✓ Mess & Kitchen Facility
- ✓ Food distribution facilities for various Project Sites
- ✓ 24x7 Medical Dispensary Facility





❑ PLANT, MACHINERY, EQUIPMENT (P.M.E.)

The Plant, Machinery & Vehicle Department maintains & manages the following in a systematic manner;

- ✓ Plant, Machinery and Vehicle fleet and deployment thereof in a systematic manner.
- ✓ Full-fledged Maintenance Workshop with Mobile Servicing Facility
- ✓ Machinery & Vehicle Service Facility



Fujseng Construction LLC

# PROJECTS



**AS MAIN CONTRACTOR  
INCLUDING DESIGN & BUILD PROJECTS**



## PROJECT WITHIN UAE - MINA AL FAJER RESORT, APARTMENT BLOCKS



The Mina Al Fajer Resort, made on the Al Hajjar Hillock overlooking the Ocean Green Sea consists of four G+5 Apartment Buildings.

Spread over an area of 17,512 SqM, the Four Apartment Blocks consisting of 86 Single & Duplex Apartments is a RCC structure with Post tensioned Slabs and are made on Pile Foundations. The Structures also has a marvelous Ethnic Elevation overlooking the Sea.

Client	H.H. Dr. Sheikh Sultan Bin Khalifa Al Nahyan
Project Location	Aka, Al Hajjar Mountain (U.A.E) Fujairah
Aluminum Works Cost	AED 3,084,621.00
Consultant	Erga Progress Consulting Engineering

Designs, supply and install sliding door, window, tilt and turn window, bottom hung window. The building had a high design wind load 2.0kpa, thus the air tight of sliding door and window is the challenge.



## PROJECT WITHIN UAE - PALACE VILLA FUJAIRAH



Spread over an area of 4,242 SqM the Palace Villa is a B+G+1 Storied RCC structure with a complete set of aluminum doors, windows and curtain wall.

Client	Government of Fujairah
Project Location	Fujairah Palace, Madhab .A.E. Fujairah U
Aluminum Works Cost	AED 250,900.00
Consultant	Assisted by Management .International Consultants LLC

Design, Supply and install sliding door, Windows, Casement windows with multipoint lock and Aluminum railing.



## ▼ PROJECT WITHIN UAE - CABLE FACTORY



Spread over an area of 12,683 SqM, the Cable factory, Office & infrastructure development is a combination of PEB Steel & RCC Structure with a well designed facade.

Client Power Plus

Project location Al Hayl Industrial Area

Aluminum Works Cost AED 67,000.00

Consultant .Semac Engineering Cons

Design, Supply and install planner fitting, column cladding ,sliding windows & door.

## ▼ PROJECT WITHIN UAE - G + M + 11 COMMERCIAL BUILDING



Spread over an area of 8,288 SqM, the G+M+11 Office Tower with stick curtain walling and windows & doors with a well designed Aluminum/Glass facade.

Client Mr. Mohammed Al Yamahi

Project location .Hamad bin Mohammed Str

Aluminum Works Cost AED 950,000.00

Consultant Assisted by Management  
.International Consultants LLC

Design, Supply and install stick curtain walling, sliding windows, bottom hung windows and Aluminum railing.

## ▼ PROJECT WITHIN UAE - G + 7 RESEDENTIAL BUILDING



Spread over an area of 4,420 SqM, the G + 7 Residential building is a modern G + 7 storied building with a well designed Aluminum/Glass facade.

Client Ministry of Finance, Govt. of Fujairah

Project location Al Sharia, Fujairah U.A.E

Aluminum Works Cost AED 612,247.50

Consultant Future Design Consultant

Design, Supply and install stick curtain walling sliding door, Window and Aluminum railing.





## ▼ PROJECT IN PROGRESS – G+M+1 OFFICE BUILDING AT PORT OF FUJAIRAH



Spread over an area of 4000 SqM the G+M+1 consists of offices with stick curtain wall & cladding facade.

Client .Globe Investments LLC

Project location Plot - A, Port of Fujairah

Aluminum Works Cost AED 886.140

Consultant Assisted by Managment  
.International Consultants LLC

Design ,supply and install stick curtain walling and cladding facade, the ground floor curtain walling with 5.95m height, automatic door and window.

## ▼ PROJECT IN PROGRESS – G+1 FOOD COURT / RESTAURANT BLDG. AT PORT OF FUJAIRAH



Spread over an area of 4000 SqM the G+1 Storied RCC structure (with post Tensioned Slab) made on a Raft Foundation, consists of Food Court & Restaurants.

Client .Globe Investments LLC

Project location Plot - C, Port of Fujairah

Aluminum Works Cost AED 886.100

Consultant Assisted by Managment  
.International Consultants LLC

Design ,supply and install stick curtain walling and cladding facade, the ground floor curtain walling with 5.95m height, automatic door and window

## ▼ PROJECT IN PROGRESS – B+G+M+1 BUILDING EXTENSION OF K.M TRADING SHOWROOM



Spread over an area of 7,630 SqM, the Showroom is a B+G+M+1 Storied with stick curtain wall at front facade.

Client Er. Rashid Hamdan Al Yamahi

Project location Anjamat, Fujairah U.A.E

Aluminum Works Cost AED 292,575.00

Consultant Assisted by Managment  
.International Consultants LLC

Design ,supply and install of stick curtain walling, automatic door, s/s bull nose window and door.





## PROJECT IN PROGRESS - SAFEER MIXED DEVELOPMENT / CENTURY MALL & HOTEL



The Century Mall is the present largest mixed development coming up in the Emirate of Fujairah and spread over an area of 77,000 SqM, and comprising of a LG Parking, with a two level Mall and a 210 Room 5 Storied four star Hotel, The mall houses a Hypermarket, Large & Small Stores, a Food Court, 5 Restaurants, 5 Cinemas and an Amusement Park.

The Hotel block are the stick curtain walling and cladding façade with large size of openable top hung.



Client Al Safeer Group of Companies

Project location Al Sharia, Fijairah U.A.E

Aluminum Works Cost AED 11,500,000

Consultant Assisted by Managment International  
Consultant LLC

Design, supply and install stick curtain walling and cladding with large size of top hung with multi point locking at the Hotel facade, automatic doors ,s/s railing, window ,door and louver at the mall.

## PROJECT IN PROGRESS - MINA AL FAJER / FAIRMOUNT HOTEL



The five star Hotel Project at Mina Al Fajer Resort, at the Al Hajjar Hillock is a 3B+G+12+LR+UR. Storied 200 room Hotel intended to be operated by the Fair Mount Group of Hotels. Spread over an area of 33,413 SqM with full height stick curtain walling facade.

Client H.H. Dr. Sheikh Sultan  
Bin Khalifa Al Nahyan

Project location Al Hajjar Mountain  
(U.A.E) Aka Fujairah

Aluminum Works Cost AED 6,941,410.00

Consultant Erga Progress Consulting  
Engineers

Design, supply and install full height stick curtain walling, sliding door ,sliding window, bottom hung window. This building is facing the sea ,thus the air tightness is the challenging of this jobs. The wind load is designed to be 2.0kpa.





## ❑ COMMERCIAL PROJECTS :

### G+2 BUILDING AT PORT OF FUJAIRAH



### DETAILS

Project details	• A G+2 Commercial development constructed over an area of 5330 Sqm. at the Port of Fujairah
Foundations	• Raft foundation
Aluminum Work	• In-house designed & manufactured Façade, Doors & Windows
M.E.P Works	• In-house
ID Works	• In-house & Sub-contracted
Project Location	• Port of Fujairah U.A.E
Client	• P.A.B , Fujairah
Consultant	• Management International Consultant
Completed in	• Work in Progress



## MINA AL FAJER RESORT

The Mina Al Fajer Resort, made on the Al Hajjar Hillock overlooking the Ocean Green Sea consists of four G+5 Apartment Buildings. Spread over an area of 17,512 SqM, the Four Apartment Blocks consisting of 86 Single & Duplex Apartments is a RCC structure with Post tensioned Slabs and are made on Pile Foundations. The Structures also has a marvelous Ethnic Elevation overlooking the Sea.





B+G+1, CENTURY MALL, B+G+5 HOTEL



DETAILS

Project details

- The Century Mall is the present largest mixed development coming up in the Emirate of Fujairah and spread over an area of 77,000 SqM, and comprising of a LG Parking, with a two level Mall and a 210 Room 5 Storied four star Hotel, The mall houses a Hypermarket, Large & Small Stores, a Food Court, 5 Restaurants, 5 Cinemas and an Amusement Park. The modern looking RCC structure with Post Tensioned Slabs and PEB Steel Structures and Ondulit Roofing System is also provided with in - house manufactured Aluminum & Glass Cladding (curtain wall).

Foundations	• Self Engineered in-house Pile Foundations
Aluminum Work	• In-house designed & manufactured Façade, Doors & Windows
M.E.P Works	• In-house
ID Works	• In-house & Sub-contracted
Project Location	• Al Sharia, Fujairah U.A.E
Client	• Al Safeer Group of Companies
Consultant	• Assisted by Management International Consultants LLC.
Project Cost	• AED 160.00 Mln
Completed in	• Work in Progress



## ✓ COMMERCIAL PROJECTS : MALLS HOTELS AND RESORTS

B+G+1, CENTURY MALL, B+G+5 HOTEL



### DETAILS

#### Project details

- The Century Mall is the present largest mixed development coming up in the Emirate of Fujairah and spread over an area of 77,000 SqM, and comprising of a LG Parking, with a two level Mall and a 210 Room 5 Storied four star Hotel, The mall houses a Hypermarket, Large & Small Stores, a Food Court, 5 Restaurants, 5 Cinemas and an Amusement Park. The modern looking RCC structure with Post Tensioned Slabs and PEB Steel Structures and Ondulit Roofing System is also provided with in - house manufactured Aluminum & Glass Cladding (curtain wall).

Foundations	• Self Engineered in-house Pile Foundations
Aluminum Work	• In-house designed & manufactured Facade, Doors & Windows
M.E.P Works	• In-house
ID Works	• In-house & Sub-contracted
Project Location	• Al Sharia, Fujairah U.A.E
Client	• Al Safeer Group of Companies
Consultant	• Assisted by Management International Consultants LLC.
Project Cost	• AED 160.00 Mln
Completed in	• 2012



B+G+1, CENTURY MALL, B+G+5 HOTEL



**B+G+M+1 BLDNG. EXTENSION OF K.M TRADING SHOWROOM**



**DETAILS**

Project details	• Spread over an area of 7,630 SqM, the Showroom is a B+G+M+1 Storied mixed development of RCC & PEB structure
Foundations	• Raft Foundation
Aluminum Work	• In-house designed & manufactured Façade, Doors & Windows
M.E.P Works	• In-house
ID Works	• In-house & Sub-contracted
Project Location	• Anjamat, Fujairah U.A.E
Client	• Er. Rashid Hamdan Al Yamahi
Design & Suprv.	• Design & Build Project
Consultant	• Assisted by Management International Consultants LLC.
Project Cost	• AED 11.20 Mln
Completed in	• Nov.2010



## G+M SHOWROOM



## DETAILS

Project details	• Spread over an area of 3,300 SqM, the Showroom is a G+M Storied RCC & PEB structure
Foundations	• Raft Foundation
Aluminum Work	• In house designed & manufactured Façade, Doors & Windows
M.E.P Works	• In-house
ID Works	• In-house & Sub contracted
Project Location	• Anjamat, Fujairah U.A.E
Client	• Er. Rashid Hamdan Al Yamahi
Design & Suprv.	• Design & Build Project
Consultant	• Assisted by Management International Consultants LLC.
Project Cost	• AED 3.20 Mln
Completed in	• 2009



## FUJAIRAH HOSPITAL ,ROYAL BLOCK



### DETAILS

#### Project details

- The Fujairah hospital Royal Block is an extension to the main Fujairah Hospital. The Single storied RCC Structure with Post tensioned Slabs, has Four Patient Rooms, connected to the Services rooms (Doctor / Nurse Office, Rest rooms and Toilets) and is connected to the main Hospital through a service corridor. The Block also has facilities to house the family members & visitors in separate Waiting / Drawing Halls and Dining hall with Kitchen & Pantry with a separate main entrance.

Foundations	• Raft Foundation
Aluminum Work	• In house designed & manufactured Façade, Doors & Windows
M.E.P Works	• In-house
ID Works	• In-house & Sub-contracted
Project Location	• Fujairah Hospital
Client	• Ministry of Health.
Design & Suprv.	• Design & Build Project
Consultant	• Assisted by Management International Consultants LLC.
Project Cost	• AED 6.30 Mln.
Completed in	• 2009



## G+M+11 COMMERCIAL BUILDING



### DETAILS

Project details	• Spread over an area of 8,288 SqM, the G+M+11 Office Tower is a RCC structure with Post Tensioned Slabs
Foundations	• Raft Foundation
Aluminum Work	• In-house designed & manufactured Façade, Doors & Windows
M.E.P Works	• In-house
ID Works	• In house
Project Location	• Hamad Bin Mohammed Street
Client	• Mr. Mohammed Al Yamahi
Design & Suprv.	• Design & Build Project
Consultant	• Assisted by Management International Consultants LLC.
Project Cost	• AED 14.70 Mln
Completed in	• April 2010

RECEPTION BLOCK OF FUJAIRAH PALACE



DETAILS

Project details

- Spread over an area of 1,578 SqM the Reception Block for Fujairah Palace, is a single storied RCC structure comprising of a Basement Garage with Drawing halls and Dining halls with Kitchen and Toilets at the Ground level.

The Front elevation is of typical RCC made as per the existing Palace Arches (made around 30 years back)

M.E.P Works	• In-house
Foundations	• Raft Foundation
Aluminum Work	• In-house designed & manufactured Façade, Doors & Windows
ID Works	• In-house & Sub-contracted
Project Location	• Fujairah Palace, Madhab Fujairah U.A.E
Client	• Government of Fujairah
Design & Suprv.	• Khatib & Alawi LLC,
Consultant	• Khatib & Alawi LLC,
Project Cost	• AED 5.90 Mln
Completed in	• 2007



## PALACE VILLA FUJAIRAH



### DETAILS

#### Project details

- Spread over an area of 4,242 SqM the Palace Villa is a B+G+1 Storied RCC structure (with post Tensioned Slab) made on a Raft Foundation and consists of 8 Bedrooms / Bathrooms, 2 Pantries, 2 drawing Halls & 2 Dining Halls. The building has a Service Block in the Basement with Maid Quarters & Laundry facilities besides a Garage and main Store and a Separate Kitchen Block

Foundations	• Raft Foundation
Aluminum Work	• In-house designed & manufactured Façade, Doors & Windows
ID Works	• In-house & Sub-contracted
M.E.P Works	• In-house
Project Location	• Fujairah Palace, Madhab Fujairah U.A.E
Client	• Government of Fujairah
Design & Suprv.	• Design & Build Project
Consultant	• Assisted by Management International Consultants LLC.
Project Cost	• AED 12.00 Mln
Completed in	• 2009



**G+35 COMMERCIAL & RESIDENTIAL BUILDING**

**DETAILS**

Project details	<ul style="list-style-type: none"> <li>• Spread over an area of 57,408 SqM, the G+35 Storied commercial &amp; Residential building project comprises of complete RCC structure &amp; slabs with a separate 5 Level Parking &amp; Services Block.</li> </ul>
Foundations	<ul style="list-style-type: none"> <li>• Pile Foundations</li> </ul>
Aluminum Work	<ul style="list-style-type: none"> <li>• In-house designed &amp; manufactured Façade, Doors &amp; Windows</li> </ul>
M.E.P Works	<ul style="list-style-type: none"> <li>• Sub-Contracted</li> </ul>
ID Works	<ul style="list-style-type: none"> <li>• In-house &amp; Sub-contracted</li> </ul>
Project Location	<ul style="list-style-type: none"> <li>• Al Ishwais Fujairah U.A.E</li> </ul>
Client	<ul style="list-style-type: none"> <li>• Er. Ali Rashid Lootah</li> </ul>
Design & Suprv.	<ul style="list-style-type: none"> <li>• Al Qalaa Engineering Consultants</li> </ul>
Consultant	<ul style="list-style-type: none"> <li>• Al Qalaa Engineering Consultants</li> </ul>
Project Cost	<ul style="list-style-type: none"> <li>• AED 72.50 Mln</li> </ul>
Completed in	<ul style="list-style-type: none"> <li>• Work in Progress</li> </ul>



## G+7 RESIDENTIAL BUILDING



### DETAILS

Project details	<ul style="list-style-type: none"> <li>• Spread over an area of 4,420 SqM , the G+7 Residential Building is a modern G+7 Storied RCC structure with Post Tensioned Slab.</li> </ul>
Foundations	<ul style="list-style-type: none"> <li>• Self Engineered in-house Pile Foundations</li> </ul>
Aluminum Work	<ul style="list-style-type: none"> <li>• In-house designed &amp; manufactured Façade, Doors &amp; Windows</li> </ul>
M.E.P Works	<ul style="list-style-type: none"> <li>• In-house</li> </ul>
ID Works	<ul style="list-style-type: none"> <li>• In-house</li> </ul>
Project Location	<ul style="list-style-type: none"> <li>• Al Sharia, Fujairah U.A.E</li> </ul>



G+4 Shopping Mall, Port Rashid , Dubai



G+10- 3 Buildings, Al Nahda, Dubai

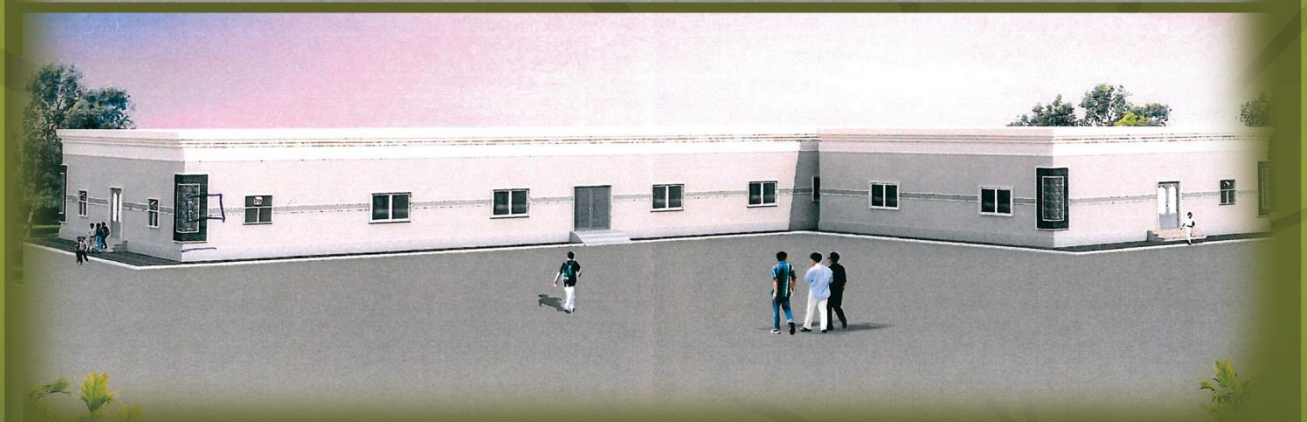


RESIDENTIAL PROJECTS

G+2 LABOR ACCOMODATION- AL HAYL FUJAIRAH



G-LABOR ACCOMODATION - MIRBAH, FUJAIRAH





### G+15 COMMERCIAL & RESIDENTIAL BUILDING



#### DETAILS

Project details	• The G+15 Storied commercial building project comprises of complete RCC structure & Post tensioned slabs
Foundations	• Raft Foundation
Aluminum Work	• In-house designed & manufactured Façade, Doors & Windows
M.E.P Works	• In-house
ID Works	• In-house
Project Location	• Al Safad Fujairah U.A.E
Client	• Mr. Eisa Hareb
Design & Suprv.	• Design & Build Project
Consultant	• Assisted by Management International Consultants LLC.
Project Cost	• AED 13.00 Mln
Completed in	• Work in Progress



### 3B+G+12, HOTEL PROJECT (FAIRMOUNT)



#### DETAILS

##### Project details

- The five star Hotel Project at Mina Al Fajer Resort, at the Al Hajjar Hillock is a 3B+G+12+LR+UR. Storied 200 room Hotel intended to be operated by the Fair Mount Group of Hotels

Spread over an area of 33,413 SqM, the RCC structure with Post tensioned Slabs and is made on Pile Foundations also has a marvelous Ethnic Elevation overlooking the Sea.

Foundations	• Pile Foundations
Aluminum Work	• In-house designed & manufactured Façade, Doors & Windows
M.E.P Works	• In house
ID Works	• In-house & Sub-contracted
Project Location	• Al Hajjar Mountain, Aka, Fujairah (U.A.E)
Client	• H.H Dr. Sheikh Sultan Bin Khalifa Al Nahyan
Design & Suprv.	• Erga Progress Consulting Engineers / ARCAN Project Management Services
Consultant	• Erga Progress Consulting Engineers
Project Cost	• AED 150.00 Mln
Completed in	• Work in Progress



Fujseng Construction LLC  
**PROJECTS**

**INFRASTRUCTURAL PROJECTS**



ALUMINUM FACTORY, OFFICE, CTRL,STORE/W.HOUSE BLDG.



DETAILS

Project details	<ul style="list-style-type: none"> <li>Spread over an area of 4,800 SqM, the Aluminum Factory &amp; Office &amp; Central Store/Warehouse Building is a combination of PEB Steel &amp; RCC Structure</li> </ul>
Foundations	<ul style="list-style-type: none"> <li>Raft Foundation</li> </ul>
Aluminum Work	<ul style="list-style-type: none"> <li>In-house designed &amp; manufactured Façade, Doors &amp; Windows</li> </ul>
M.E.P Works	<ul style="list-style-type: none"> <li>In-house</li> </ul>
ID Works	<ul style="list-style-type: none"> <li>In-house</li> </ul>
Project Location	<ul style="list-style-type: none"> <li>Al Hayl Industrial Area</li> </ul>
Client	<ul style="list-style-type: none"> <li>Fujseng Construction LLC.</li> </ul>
Design & Suprv.	<ul style="list-style-type: none"> <li>Design &amp; Build Project</li> </ul>
Consultant	<ul style="list-style-type: none"> <li>Assisted by Management International Consultants LLC.</li> </ul>
Project Cost	<ul style="list-style-type: none"> <li>AED 6.40 Mln</li> </ul>
Completed in	<ul style="list-style-type: none"> <li>2008</li> </ul>



**CABLE FACTORY, OFFICE & INFRASTRUCTURE DEVELOPMENT**

**DETAILS**

Project details	<ul style="list-style-type: none"> <li>• Spread over an area of 12,683 SqM, the Cable factory, Office &amp; infrastructure development is a combination of PEB Steel &amp; RCC Structure</li> </ul>
Foundations	<ul style="list-style-type: none"> <li>• Raft Foundation</li> </ul>
Aluminum Work	<ul style="list-style-type: none"> <li>• In-house designed &amp; manufactured Façade, Doors &amp; Windows</li> </ul>
M.E.P Works	<ul style="list-style-type: none"> <li>• In-house</li> </ul>
ID Works	<ul style="list-style-type: none"> <li>• In-house &amp; Sub-contracted</li> </ul>
Project Location	<ul style="list-style-type: none"> <li>• Al Hayl Industrial Area</li> </ul>
Client	<ul style="list-style-type: none"> <li>• M/s Power Plus Cables LLC.</li> </ul>
Design & Suprv.	<ul style="list-style-type: none"> <li>• SEMAC Consulting Engineers</li> </ul>
Consultant	<ul style="list-style-type: none"> <li>• SEMAC Consulting Engineers</li> </ul>
Project Cost	<ul style="list-style-type: none"> <li>• AED 16.00 Mln</li> </ul>
Completed in	<ul style="list-style-type: none"> <li>• 2009</li> </ul>



**MINA AL FAJER RESORT , INFRA STRUCTURAL WORKS**

**DETAILS**
**Project details**

- The infrastructure works at Mina AL Fajer Resort consist of the following facilities;
- ✓ Storm Water drainage for the resort
- ✓ Roads & drains for the resort
- ✓ Street Lighting, for the resort
- ✓ Complete Electric Supply with One main station & 9 Electric sub-stations for the resort
- ✓ Complete Water Supply for the resort
- ✓ Fire Fighting System for the resort

**Foundations**

- Isolated Footings & Plinth Beam Foundations

**Aluminum Work**

- In-house designed & manufactured Doors & Windows

**M.E.P Works**

- In-house

**Project Location**

- Al Hajjar Mountain, Aka, Fujairah (U.A.E)

**Client**

- H.H Dr. Sheikh Sultan Bin Khalifa Al Nahyan

**Design & Suprv.**

- Erga Progress Consulting Engineers / ARCAN Project Management Services

**Consultant**

- Erga Progress Consulting Engineers

**Project Cost**

- AED 43.50 MIn

**Completed in**

- 2011





## INFRA-STRUCTURAL PROJECTS

### MINA AL FAJER INFRASTRUCTURE WORKS

- Storm water Network
- Drainage Network
- Water Supply Network
- Electrical Substations – ( 9 Nos. )
- Electrical Distribution Network
- Chilled Water Pipe line Network
- Sewage Treatment



### STORM WATER DRAINAGE PROJECT – FUJAIRAH TO BIDIYAH TOWN.

Spread over a length of 15 Kms, the surface storm water drainage project for the Fujairah Municipality caters to the entire catchment area between Fujairah and Mirbah from the mountain range up to the sea.

Involving major excavation works below NSL, the project involved intensive study on the underground services available within the area and NOCs had to be obtained from all government authorities.

The project also involved construction of around 9 culverts at various road crossings.

Constructed at a project cost of around AED 30 Million, The Storm Water Channel has an accurate gradual slope along its length to insure smooth gravity flow of storm water into the sea.

Effective coordination was carried out with various Government & other authorities involved in lieu of the intricate underground services like Sewage Disposal Network, Etisalat Network Cables, FEWA Electric & Water distribution Networks, Gas Pipe Line, Defense Cables etc. Diverting and protection of the underground services, was also undertaken at various places.







27.11.2011 16:28



27.11.2011 16:14



27.11.2011 16:22



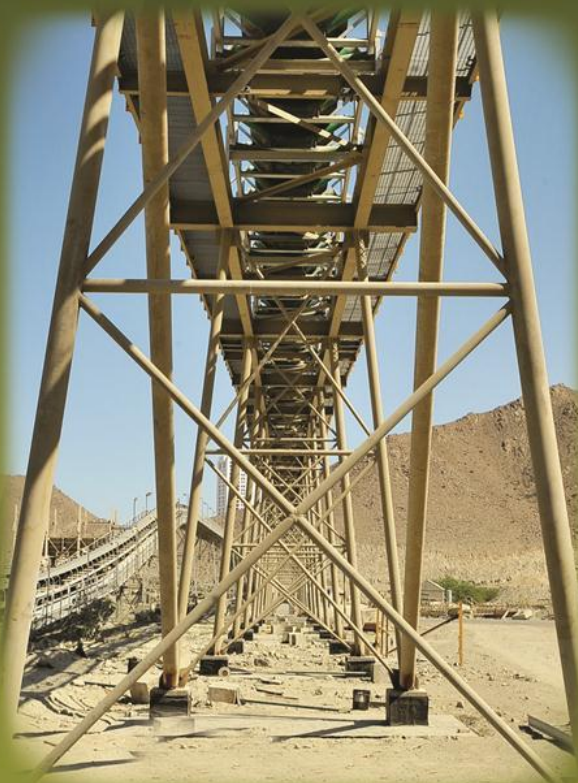
## STORM WATER DRAINAGE SYSTEM



### DETAILS

Project details	<ul style="list-style-type: none"> <li>Storm water drainage system at highway location from Fujairah to Murbah. Spread over a length of around 14 km, this infrastructural project comprises of construction of Foundations, Tunnels, Channels, Under-path at Highway, Retaining Walls &amp; Road works.</li> </ul>
Foundations	<ul style="list-style-type: none"> <li>Isolated &amp; Raft Foundations</li> </ul>
Project Location	<ul style="list-style-type: none"> <li>Fujairah - Murbah</li> </ul>
Client	<ul style="list-style-type: none"> <li>Govt. of Fujairah (Fujairah Municipality)</li> </ul>
Design & Suprv.	<ul style="list-style-type: none"> <li>MUC Engineering Consultants</li> </ul>
Consultant	<ul style="list-style-type: none"> <li>MUC Engineering Consultants</li> </ul>
Project Cost	<ul style="list-style-type: none"> <li>AED 27 Mln</li> </ul>
Completed in	<ul style="list-style-type: none"> <li>Work in Progress</li> </ul>





## BELT CONVEYOR PROJECT - PORT OF FUJAIRAH

Completed at a total cost of around AED 110 Mln the Belt Conveyor Project connects the Stone aggregate mining and crushing projects at the Fujairah mountains with the Port of Fujairah ship loading terminal. The conveyor system covers a total length of around 5 kms and involves construction of Underground Channels, Underpass and foundations for Steel towers including Tunnels at road junctions. The project also includes construction of a Heavy duty Loading Station, Electric Station, Transfer Stations, Retaining Walls and Road Works.

The project was completed in effective coordination with various Government & other authorities involved in lieu of the intricate underground services like Sewage Disposal Network, Etisalat Network Cables, FEWA Electric & Water distribution Networks, Gas Pipe Line, Defense Cables etc. Diverting and protection of the underground services, was also undertaken at various places while constructing the foundation systems for the Belt Conveyor system.





BELT CONVEYOR EXPANSION PROJECT FOR PORT OF FUJAIRAH





BELT CONVEYOR EXPANSION PROJECT FOR PORT OF FUJAIRAH



DETAILS





## BELT CONVEYOR EXPANSION PROJECT FOR PORT OF FUJAIRAH



### DETAILS

Project details	<ul style="list-style-type: none"> <li>• Spread over a length of around 4.70 KMS, this infrastructural Belt Conveyor Project comprises of construction of Belt conveyor Foundations, Tunnels, Channels, Under-path at Highway, Loading Station, Electric Station Buildings, Transfer stations, Retaining Walls &amp; Road work.</li> </ul>
Buildings	• Main Works includes Precision Pre-cast & Cast in Situ RCC works
Foundations	• Isolated & Raft Foundations
Aluminum Work	• In-house designed & manufactured Façade, Doors & Windows
M.E.P Works	• In-house
Project Location	• Port of Fujairah to Mountains
Client	• Port of Fujairah
Design & Suprv.	• Concept Consulting Engineers
Consultant	• Concept Consulting Engineers
Project Cost	• AED 40.00 Mln.
Completed in	• 2012



**AL-QUARRIAH UNDER PASS**

**DETAILS**
**Project details**

- This infrastructural Project, the Quarriah under path, was made for the Government of Fujairah through W.J&P. The RCC structure made on RCC Abutments, has been made adjacent to the existing Oil & Gas Pipeline which too has been duly Protected with RCC Protection. The under path services the uninterrupted movement for Rock Carriers below the Highway to the Rock Export Terminal of Fujairah Port.

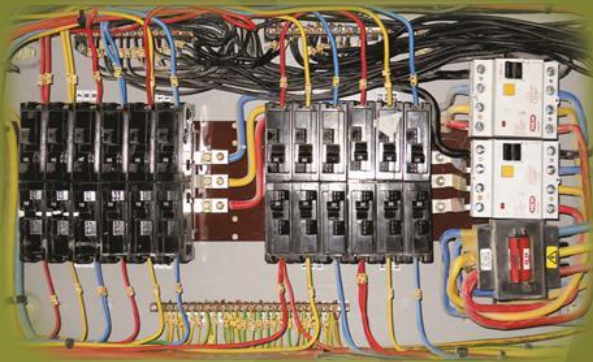
Project Location	• Fujairah Khorfakhan Highway, Quarriah, Fujairah U.A.E
Client	• Govt. of Fujairah
Design & Suprv.	• M.U.C Consultants
Consultant	• M.U.C Consultants
Project Cost	• AED 5.60 Mln
Completed in	• 2009



## SOME SPECIFIC M.E.P WORKS UNDERTAKEN

### Electrical Systems

1. Electrical installations of 11KV & 33KV / sub-station & distribution networks.
2. Stand by D.G. Sets, Synchronized & Parallel operated systems.
3. Uninterrupted power supply systems.
4. Illumination designs & selection of luminaries for aesthetic lighting.
5. D.C. distribution systems.
6. Low voltages systems for building automation including communication, safety & surveillance

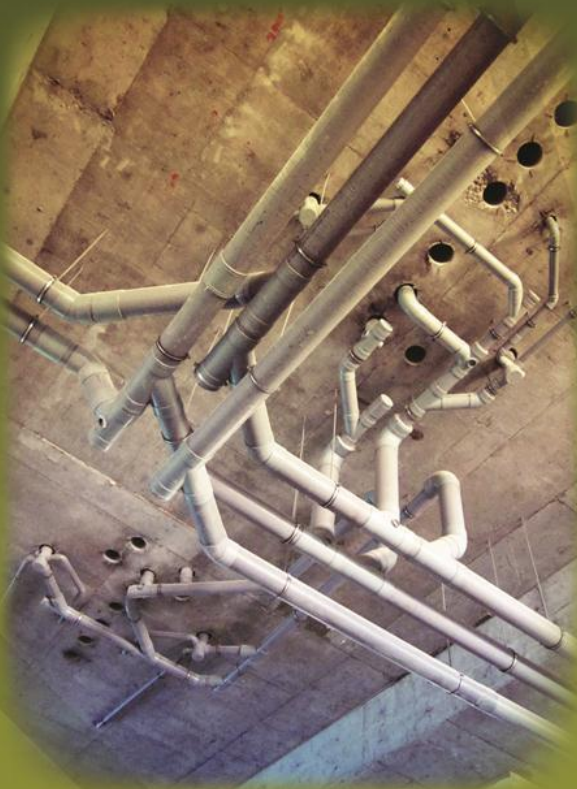


## FIRE PROTECTION SYSTEMS

1. Sprinkler Systems
  - Wet type
  - Dry type
2. Flooding Systems
  - FM 200 AND NAF SIII
  - INERGEN
  - CO2 FLOODING
3. Fire Hydrants
  - Wet Risers
  - Dry Risers
4. Fire Detection systems
  - Manual type
  - Automatic
  - Analog addressable
  - Digital addressable
5. Security Systems
  - Access control
  - Intruder Alarm
  - Closed Circuit Television surveillance
  - Perimeter protection
  - Portable Fire Extinguishers







## ■ PLUMBING & SANITATION SYSTEMS

1. Waste Water disposal & treatment, Water supply, Collection, pumping & piping distribution Systems
2. Central hot water generation & Supply systems including solar water heating / water generator systems
3. Storm water collection and disposal systems
4. Rain water harvesting systems
5. Domestic water softening and treatment plants.
6. Hydro pneumatic System for Distribution of treated water
7. Drainage collection disposal systems
8. Sewage treatment plant (STP)

## ■ HEATING, VENTILATION & AIR CONDITIONING SYSTEMS

1. Air conditioning
2. Central and localized Heating applications
3. Mechanical Ventilation for parking and basement areas
4. Refrigeration System for Cold Storage
5. Clean Room applications for Pharmaceuticals and Hospitals
6. Industrial Ventilation for Warehouses and Factories





Fujseng Construction LLC  
**Aluminium/Steel Fabrication Unit**

**Aluminium Facade Engineering Unit**

## ▼ INTRODUCTION

Fujseng Construction LLC, has the expertise to undertake Turnkey Design & Build Engineering Contracts ranging from High Rise Building Projects and M.E.P Projects to Infrastructural Projects and also has a full fledged Aluminium Facility (Factory) located at Al Hayl, Fujairah which is duly equipped with a completely Mechanized Production Line for manufacture of high quality Aluminium Products such as;

- Doors & Windows of different designs
- Curtain Walls / Building Envelopes / Facades of different intricate designs
- Custom made Aluminium Products for Buildings
- Aluminium Hand Rails
- Aluminium Fencing
- Planar Fittings / Point Fix Glass Façade
- Aluminium / Glass Canopies
- Skylights



## ▼ ALUMINIUM / FACADE ENGINEERING OFFICES & FACTORY

The Aluminium / Facade Engineering Factory has been set up at Al Hayl, Fujairah, which has a display showroom and a fully functional office having facilities for in-house designing to conceive designs suiting the customer requirements.

The factory is spread over a shop floor area of 2,400 sqm and is equipped with latest machinery like : Twin Head Miter Saws; Power Presses 16/25/40 ton; Copy Routers; End Milling Machines; Profile Bending Machines; Cramping Machines; Vertical Panel Saws; Roll Froming Machine; Air Receivers Vertical (1000L); Lifting Equipment etc.







## ▼ HUMAN RESOURCES / MANAGEMENT

Reporting to the Executive Director of the company, the operations at the Aluminium factory & related Projects, are headed by a Divisional Manager, having around 20 years of hands on experience in Aluminium & Glass works for High Rise Buildings in Malaysia, Singapore and United Arab Emirates and is assisted by a team of experienced Engineers, Supervisors besides a dedicated work force of around 100 skilled workers at present.

The following departments of Fugseng provide full back up to the Aluminium Facility.

- Contracts & Planning Department
- Finance Department
- Procurement Department
- Human Resources & Administration Department
- IT Wing





The Division is managed by well qualified/experienced Professionals and a factory set-up equipped with a computerized machinery line to manufacture and assemble Steel / Aluminum components like Doors, Windows, Facade systems etc.







## ▼ PRODUCTION LINE





## PRODUCTION LINE





▼ PRODUCTION LINE



Fujseng Construction LLC  
**PROJECTS**

**ALUMINIUM / FAÇADE ENGINEERING  
PROJECTS**



# Aluminium/Façade Engineering Projects

## ▼ PROJECT OUTSIDE U.A.E – COMPACT HOTEL, MALAYSIA



G+17 Hotel Building with segmented curtain walling on the center of building.

Client Compact Metal Group

Project location Johor Bharu Malaysia

Project cost RM 3,200,000

Consultant DBS Consultant

Design, Supply and install of segmented curtain walling, Window, Door & Shop front

## ▼ PROJECT OUTSIDE U.A.E – PSV VISTA, SINGAPORE



G+8 PSA Singapore Building with Segmented Stick curtain walling and planar fitting system at entrance

Client Port of Singapore Authority

Project location Singapore

Project cost AED 4,094,000 RM

Consultant DSB Consultant

Design, Supply and install segmented stick curtain wall, Planar fitting with steel trusses Window, Door and automatic door. The engineer calculation on the trusses and accuracy in all parts like steel of the trusses, Glass hole for the Spider is the challenging to this job

## ▼ PROJECT OUTSIDE U.A.E – MENARA DION, KUALALUMPUR



G+M+35 Office Tower with unitize curtain walling system and granite in build to the unitize curtain wall frame

Client Menara DION LTD

Project location Kuala Lumpur, Malaysia

Project cost Million RM 18.5

Consultant Kumpulan Samiraka sdn Bhd

Design, Supply and install unitize curtain walling, This unitize curtain walling framing is design to take the dead load of granite because the granite install to the unitize curtain wall frame the special size box is 300 x 600mm also be install as fin in this tower and canopy.

# Aluminum/Façade Engineering Projects

## ▼ PROJECT OUTSIDE U.A.E – BERJAYA HOTEL COMPLEX, MALAYSIA



G+4 Floor Podium 2 Tower +21 Floor Shopping Mall and Hotel

Engineering calculation, Safety factory interfacing issue erection matter and close supervision and coordination of leaders from projects, Designer, Engineer, Factory Manager, Site Manager, Fabricator, Installer and others

Client .Pernnas Construction Bhd

Project location Penang, Malaysia

Project cost RM 16.200.000

Consultant . Bhd.Architect LLA Sdn

Design, Supply and install stick curtain walling full height window at hotel continues front façade, canopy skylight between two podium block, The skylight is 80mt long spans and 12mt width and front façade is 19.2mt height thus is involve a lot of design,

## ▼ PROJECT OUTSIDE U.A.E - HOTEL EQUATORIAL, MALAYSIA



G+M3 +18 Floor 5 Star Hotel

Client Compact Metal Group

Project location Malacca, Malaysia

Project cost Million RM 2.85

Design, Supply and install full height stick curtain walling window, Door, Automatic door







# Aluminium/Façade Engineering Projects



## ALUMINIUM WORKS - SHEIKH ZAYED ISLAMIC CENTER IN FUJAIRAH



### SHEIKH ZAYED ISLAMIC CENTER IN FUJAIRAH

Spread over more than 70,000 Sqm with ECO-500 series arc fixed glass. All aluminum frames are powder coated having wooden grains finish to create a traditional mosque facade with modern technology. The Arc frames are provided with jumbo, double glazed glass and most of the glass is more than 200 kg of heights 10m, 16m height above floor



Client	Ministry of Public Works
Project Location	Fujairah City
Aluminium Works Cost	AED 1,381,500
Main Contractor	M/s . United Engg. Construction LLC.
Consultant	Al Mabani Consulting Engg.



## PROJECT IN PROGRESS - AL DEYAR INTERNATIONAL SCHOOL



The AL Deyar International School - Fujairah, spread over 18,000 Sqm is provided with Arc-stick Curtain Walling, for additional safety considerations, in lieu of the project being a school. The stick curtain walling with an arc above windows, doors has the aluminum railing with additional steel reinforcement inside the profile to ensure the extra safety and all glass panes are tempered (both sides).

Client	Emirates Educational Services
Project Location	Al Sharia, Fujairah
Aluminium Works Cost	AED 850,000
Main Contractor	FNCT
Consultant	DRU Architect, Engineers, Interior Design







# Aluminium/Façade Engineering Projects

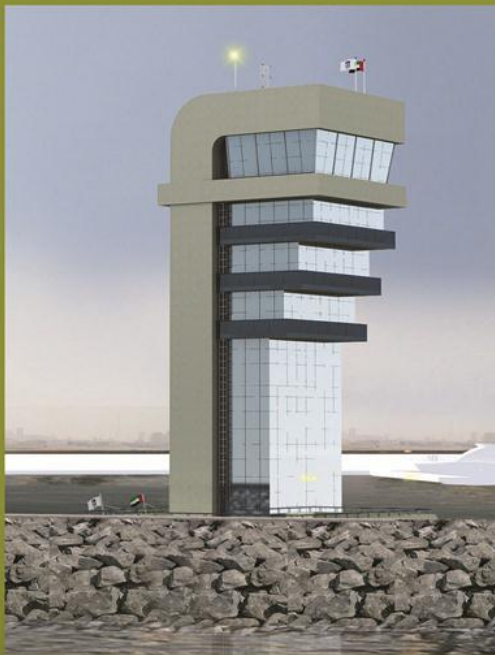
## PROJECT IN PROGRESS - G+2M+7TYP + 5 OFFICE BUILDING



The G+2M+8 typ.+5 Office / Commercial Building. also known as ALCON Building and located at Al Sharia - 1, Fujairah, is Spread over 8,000 Sqm. The building is provided with 4-sided Structural and Glazed, (stick curtain walling) at the front elevation extending slightly towards the right elevation. The building is also fully clad with aluminium cladding. Decorative bull nose Composite Panel frame crosses the cladding & curtain wall at every floor. Also 4 mm thick Alubond composite panel with 50mm rockwool insulation is provided behind the composite panel. Additionally patch fittings is provided at the top corner for Automatic (Air tight) door at ground floor. There are also projection windows at curtain walling. The building is provided with Windows, Doors, Louvers, decorative Aluminium hollow boxes for sunshade, Steel and Aluminium Railing, SUS Column Cladding, A Clad Canopy and Double glazed glass.

Client :	Abdullah Saeed Khalaf Mohammed Al Yamahi
Project Location :	Al Sharia-1, Fujairah
Aluminium Works Cost :	AED 2,394,477
Main Contractor :	Fujairah National Const. & Transport
Consultant :	Talal Nawfal

## PROJECT IN PROGRESS - G+8 PORT CONTROL TOWER



The Port of Fujairah, Control Tower is a G+8 Building, spread over 1280 SqM and located near the Sea, which accordingly requires additional care against wind loads and corrosion. The Aluminium & Glazing works of this building consist of a 4 sided structural glazed curtain walling which is sloping at the 8th floor and Ground floor. Others works including Automatic Door with Logo, Canopy, Windows, Doors, Steel and Aluminium Railing, Internal glass partitions with Sand Blasted Pattern and Polymer coating on the Sand Blasted pattern.

Client :	Port of Fujairah
Project Location :	Sea Port, Fujairah
Aluminium Works Cost :	AED 564,000
Main Contractor :	Fujairah National Const. & Transport
Consultant :	DRU Architect, Engineers,Interior Design







## ▼ PROJECT IN PROGRESS - G+1 ROYAL HANGER

Spread over an area of 10,500 Sqm the building is a combination of steel structure, RCC and block work. As due to the location being inside the Airport the cladding and Curtain Wall are designed for a wind load of 1.72 kpa. The scope of work includes stick Curtain Wall, Compartment with Steel Structural and Curtain Wall, Apolic fire rated Cladding, Automatic Door, Windows, Louver, Panic Device, Steel and Aluminium Railing.

Client :	Fujairah International Airport	
Project Location :	Fujairah Airport	
Aluminium Works Cost :	AED 708,200	
Main Contractor :	Fujairah National Const. & Transport	
Consultant :	Khatib & Alami	

**Picture restricted**





## PROJECT IN PROGRESS - G+2 AIRLINES OFFICE

This new AirLines Office building for Fujairah International Air Port spreads over 3800 Sqm and the complete front Façade is a fully glazed and Aluminium clad, curved Façade (Concave). There are too many combinations of 4 Sided Structural Glazed Curtain Wall to Cladding, to curve wall and suspension wall (an intricate design). The scope of works involve 4 sided Structural glazed with U-insets which is also called Mechanical fixed glass system and is an equivalent to Alu-K system, Schuco system or other International Curtain Walling system, Windows, Doors, Canopy, SUS Column Cladding, Automatic Door, all doors with master key System and aluminium Cladding.

Client :	Fujairah International Airport
Project Location :	Fujairah Airport
Aluminium Works Cost :	AED 1,080,786
Main Contractor :	Fujairah National Const. & Transport
Consultant :	DRU Architect, Engineers, Interior Design





G+4 BUILDING - OMAN



PASSENGER ENCLOSURE - FUJAIRAH







## PRODUCTION LINE







Fujseng Construction LLC  
**PROJECTS**

**STEEL FABRICATION PROJECTS**



## PIPE RACK PROJECT



### ■ PIPE RACK PROJECT – CONNECTION OF END USERS TO MATRIX MANIFOLD OF PORT OF FUJAIRAH

The Pipe Rack Project for the port of Fujairah is being built on behalf of the end users by the Port of Fujairah and connects these end users to the Matrix manifold of Port of Fujairah for export purposes. Costing around AED 30 Million, the project involves construction of Underpass and foundations for Steel Rack Framed structure, Steel Framed Structures / Pipe Racks including Piling works.

Spread over a length of around 4 Kms, the project also involves an intensive study of underground services within the area / length of the project and effective coordination with various Government & other authorities involved in lieu of the intricate underground services like Sewage Disposal Network, Etisalat Network Cables, FEWA Electric & Water distribution Networks, Gas Pipe Line, Defense Cables etc. Diverting and protection of the underground services, is also to be undertaken at various places.











### DETAILS

Project details	<ul style="list-style-type: none"><li>• FEWA pipe diversion in connection with Pipe Rack project at port of Fujairah.</li></ul>
Structure	<ul style="list-style-type: none"><li>• Pipes with 97.0 meters length and 600mm , 400mm dia.</li></ul>
Steel Works	<ul style="list-style-type: none"><li>• In-house designed &amp; manufactured</li></ul>
M.E.P Works	<ul style="list-style-type: none"><li>• In-house</li></ul>
Project Location	<ul style="list-style-type: none"><li>• Port of Fujairah U.A.E</li></ul>
Client	<ul style="list-style-type: none"><li>• Municipality of Fujairah</li></ul>
Consultant	<ul style="list-style-type: none"><li>• M.U.C Engineering Consultant</li></ul>
Completed in	<ul style="list-style-type: none"><li>• 2012</li></ul>



## FUJAIRAH CLUB- GALLERY



### DETAILS

Project details	<ul style="list-style-type: none"> <li>Having a seating capacity of 2312 seats, the complete stadium gallery was constructed in a recent period of 45 days</li> </ul>
Structure	<ul style="list-style-type: none"> <li>The seats rest over precast concrete panels duly supported by a steel structure, engineered and fabricated by Fujseng at Steel &amp; Aluminium factory.</li> <li>The facilities below the gallery consist of rest rooms, toilets, offices and stores.</li> </ul>
Foundations	<ul style="list-style-type: none"> <li>RCC isolated footing with neck columns and tie beam structure</li> </ul>
Aluminum Work	<ul style="list-style-type: none"> <li>In-house designed &amp; manufactured Façade, Doors &amp; Windows</li> </ul>
M.E.P Works	<ul style="list-style-type: none"> <li>In-house</li> </ul>
ID Works	<ul style="list-style-type: none"> <li>In-house &amp; Sub-contracted</li> </ul>
Project Location	<ul style="list-style-type: none"> <li>Al Ahli Club, Fujairah U.A.E</li> </ul>
Client	<ul style="list-style-type: none"> <li>Al Ahli Club Fujairah</li> </ul>
Consultant	<ul style="list-style-type: none"> <li>DRU Consultant</li> </ul>
Completed in	<ul style="list-style-type: none"> <li>2012</li> </ul>



## REBAR CUT & BEND DIVISION & FACTORY

The Rebar Unit / Yard Facility is run by well qualified & experienced professionals working with Precision Software, Machinery & Equipment. The Yard having mechanized loading / unloading facilities with precision Cutting & Bending machinery, takes care of supply of Cut & Bend Rebar requirements of the various projects of the company besides catering market requirements.



**Fujairah** غرفة تجارة وصناعة  
Chamber of Commerce & Industry **الفجيرة**

**شهادة عضوية**  
**Membership Certificate**

رقم الرخصة

Licence No.

100044

رقم العضوية

Membership No.

10022

رقم السجل التجاري

Commercial Register No.

10026977

إن غرفة تجارة وصناعة الفجيرة وبناءاً على قانونها رقم (1) لعام 2007م قد سجلت:  
Fujairah Chamber of Commerce & Industry and in accordance with its Law No. (1) for 2007 here in registered

Trade Name : Fujiseng Construction L.L.C

الإسم التجاري: فوجيسنج للمقاولات م.م

Activity

Al civil Building Projects Contracting - Ready  
Mixed Concrete Manufacturing - Foundations  
Excavation and Props Installation - Mechanical  
Construction - Electrical Construction - Aluminium  
and Glass Installation Workshop

مقاولات مشاريع عملي، بترابها - درجة أولى  
مناولة لمركبة قياسية  
مقاولات حفر، تأسيسات، تثبيت، إزاحة، وق لحراش  
مقاولات ميكانيكية  
مقاولات كهربائية  
ورشة للتركيب، الألمنيوم والزجاج

النشاط

Address

فكس - FAX	هاتف - TEL	الفجيرة
09-2244389	09-2244388	7226
		بريد - P.O.BOX

العنوان

Category

Excellent

الممتازة

Legal Status

Limited Liability Company

الشكل القانوني: شركة ذات مسؤولية محدودة

Co. Nationality

United Arab Emirates

جنسية الشركة: الإمارات العربية المتحدة

Issue Date

May, 2013 21

تاريخ الإصدار

Expiry Date

21 May, 2014

تاريخ الانتهاء

Partners Nationality

United Arab Emirates

جنسية الشركاء: الإمارات العربية المتحدة



27/05/2013 12:43:00 PM 15925

85969

غرفة تجارة وصناعة الفجيرة

www.fujcci.ac



**Fujairah** غرفة تجارة وصناعة  
Chamber of Commerce & Industry **الفجيرة**

**شهادة عضوية**  
**Membership Certificate**

رقم الرخصة

Licence No.

100044

رقم العضوية

Membership No.

10022

رقم السجل التجاري

Commercial Register No.

10026977

إن غرفة تجارة وصناعة الفجيرة وبناءاً على قانونها رقم (1) لعام 2007م قد سجلت:  
Fujairah Chamber of Commerce & Industry and in accordance with its Law No. (1) for 2007 here in registered

Trade Name : Fujiseng Construction L.L.C

الإسم التجاري : فوجيسنج للمقاولات م.م

Activity

Al civil Building Projects Contracting - Ready  
Mixed Concrete Manufacturing - Foundations  
Excavation and Props Installation - Mechanical  
Construction - Electrical Construction - Aluminium  
and Glass Installation Workshop

مقاولات مشاريع عملي، بترابها - درجة أولى  
مناولة لمركبة قياسية  
مقاولات حفر، تأسيسات، تثبيت، تركيب، وق لحراش  
مقاولات ميكانيكية  
مقاولات كهربائية  
ورشة لتركيب الألمنيوم والزجاج

النشاط

Address

فكس - FAX	هاتف - TEL	الفجيرة
09-2244389	09-2244388	7226
		بريد - P.O.BOX

العنوان

Category

Excellent

الممتازة

Legal Status

Limited Liability Company

الشكل القانوني : شركة ذات مسؤولية محدودة

Co. Nationality

United Arab Emirates

جنسية الشركة : الإمارات العربية المتحدة

Issue Date

May, 2013 21

تاريخ الإصدار

Expiry Date

21 May, 2014

تاريخ الانتهاء

Partners Nationality

United Arab Emirates

جنسية الشركاء : الإمارات العربية المتحدة



27/05/2013 12:43:00 PM 15925

85969

غرفة تجارة وصناعة الفجيرة

www.fujcci.ac

UNITED ARAB EMIRATES  
FUJAIRAH GOVERNMENT  
FUJAIRAH MUNICIPALITY



دولة الإمارات العربية المتحدة  
حكومة الفجيرة  
بلدية الفجيرة

تجديد  
Renew

رخصة مهنية  
Professional License

License Number 198244 رقم الرخصة Federal Registry No 10028177 رقم السجل المركزي الموحد  
Chamber Membership No 10022 رقم العضوية في الغرفة  
Business Name FUJSENG CONSTRUCTION LLC الاسم الاقتصادي  
Legal Type Limited Liability Co. الشكل القانوني شركة ذات مسؤولية محدودة

Business Activities / أنشطة

Remarks	Activity Name (En)	Activity Name (Ar)	Serial #
	Aluminum and Glass Installation Workshop	ورشة لتركيب الألمنيوم والزجاج	1
	Electrical Construction	لتنفيذ الكهرباء	2
	Mechanical Construction	لتنفيذ الميكانيكا	3
	Piling & Foundation Construction	تأجير الآلات و تنفيذ الأساس و دق الحواجز	4
	Ready Mixed Concrete Manufacturing	صناعة الخرسانة الجاهزة	5
	All Kind Building Projects	تأجير الآلات و مواد البناء و دق الزاوي	6
	non-residing-flat Degree		

Address / العنوان

Unit / وحدة	Building / مبنى	Street / شارع	Area / منطقة فرعية	Main Area / منطقة إقليمية
	شركة تالوب للاستثمار	محددة	مركز المدينة	أبوظبي

Fax	Tel	0104533058	Mobile / هاتف	77777777
Expiry Date 22/05/2014 تاريخ انتهاء	Issue Date 22/05/2013 تاريخ إصدار	Expiry Date 62/04/2066 تاريخ انتهاء	Expiry Date 20000000 تاريخ انتهاء	Remarks

Remarks



This Document is considered as Professional Registry

رئيس مجلس المدسسين

تقوم هذه الرخصة بمثابة شهادة معتمد مهني



UNITED ARAB EMIRATES  
FUJAIRAH GOVERNMENT  
FUJAIRAH MUNICIPALITY



دولة الإمارات العربية المتحدة  
حكومة الفجيرة  
بلدية الفجيرة

تجديد  
Renew

ملحق أصحاب العلاقة  
Stakeholders

License Number 100044 رقم الرخصة Federal Registry No 10028977 رقم السجل المركزي الموحد  
Business Name FUJENG CONSTRUCTION LLC الاسم التجاري فوجينج للبناءات ذ.م.م

أصحاب العلاقة / Stakeholders

نسبة المساهمة Rate (%)	النوع Type	الجنسية Nationality	الاسم Name	الرمز No.
51.00000	شريك Partner	الإمارات العربية المتحدة United Arab Emirates	الشركة التجارية لما وراء البحار OVERSEAS TRADING CO	875
49.00000	شريك Partner	الإمارات العربية المتحدة United Arab Emirates	الشركة العامة للاستيراد والتصدير ذ.م.م	3917
0.00000	مدير Director	لبنان Lebanon	جورج جميل بلك GEORGE JAMEL BALK	877





License Details / تفاصيل الرخصة

License Members / اطراف الترخيص

License Activities / نشاطات الرخصة التجارية

Address / العنوانRemarks / ملاحظات

Au(Pd)Pt <sub>3</sub>	مختلطة الذهب والفضة
CuNiZnS	نحاس النيكل الزنك الكبريت

<http://www.dubaied.gov.ae>  
 (The above information is issued without signature by the Department of Economic Development. To verify the license kindly visit <http://www.dubaied.gov.ae>)



# غرفة دبي DUBAI CHAMBER

## شهادة تسجيل العضوية Membership Certificate

License no.	691474	رقم الرخصة	691474
Membership no.	220627	رقم العضوية	220627
Registration no.	0	رقم السجل التجاري	0
Trade Name	FUJENG CONSTRUCTION LLC - DUBAI BRANCH	الاسم التجاري	فوجينج للمقاولات ذ.م.م - فرع دبي
Legal Status	Branch of Company Reg in Other Emirates	النوع القانوني	فرع لشركة مقرها في إمارة أخرى
Activity	Piling and foundation contracting * Building contracting * Glass and aluminum installation and maintenance * Electrical fitting contracting * Telemechanical equipment installation and maintenance	نوع النشاط	معالجة - مقر الشركة - تثبيت - تركيب * مقاولات البناء * تركيب الزجاج وتثبيت الألمنيوم في المباني ومبانيها * أعمال التجهيزات الكهربائية * أصناف تركيب المعدات الكهربائية ومبانيها
Member Since	07-JUL-2013	تاريخ الانضمام	07-JUL-2013
Date of Issue	05-AUG-2013	تاريخ الإصدار	05-AUG-2013
Expiry Date	03-JUL-2014	تاريخ الانتهاء	03-JUL-2014

### Remarks

This certificate shall be invalid in case of any alteration without chamber's authorization

For online verification at this Certificate, please visit our website  
<http://www.dubai-chamber.ae/verify>

غرفة تجارة وصناعة دبي  
Dubai Chamber of Commerce & Industry

P.O. Box 1497 - Dubai, U.A.E. | Tel: (Within U.A.E.) 000 0000000 (000 2122237) | Tel: (Outside U.A.E.) (+971) 4 2200000 هاتف  
Fax: (+971) 4 2211546 فاكس | [customerservice@dubai-chamber.ae](mailto:customerservice@dubai-chamber.ae) | [www.dubai-chamber.ae](http://www.dubai-chamber.ae)

### الملاحظات

تعتبر هذه الشهادة لاغية في حال أي تعديل عليها دون اعتماد ذلك من الغرفة

للتأكد من صحة بيانات الشهادة يرجى الرجوع إلى موقع الغرفة  
<http://www.dubai-chamber.ae/verify>



<p>UNITED ARAB EMIRATES MINISTRY OF PUBLIC WORKS TENDERS &amp; CONTRACTS DEPT</p>	 <p>شهادة تسجيل مقاول</p>	<p>الإمارات العربية المتحدة وزارة الأشغال العامة إدارة المناقصات والعقود</p>
<p>Registration No :</p>	<p>رقم التسجيل : 128235</p>	
<p>Commercial Name :</p>	<p>الإسم التجاري : Fujiseng Construction LLC</p>	
<p>Address :</p>	<p>العنوان : القجرة</p>	
<p>Phone :</p>	<p>الهاتف : 092244388</p>	
<p>PO . Box :</p>	<p>ص . ب : 7226</p>	
<p>Fax :</p>	<p>الفاكس : 092244399</p>	
<p>Registration Fields :</p>	<p>مجال التسجيل : مقاول - مقاول مباتى</p>	
<p>Issue Date :</p>	<p>تاريخ الإصدار : 25/08/2011</p>	
<p>Expire Date :</p>	<p>تاريخ الانتهاء : 24/08/2012</p>	
<p>Receipt No. &amp; Date :</p>	<p>رقم الإيصال وتاريخه : 700008629 - 25/08/2011</p>	

إكمال التسجيل

\*Note : - This certificate issued by Ministry of Public Works and it does not need any signature or formal stamp.  
 - This certificate is cancelled in case the trade license is expired.





دولة الإمارات العربية المتحدة  
الهيئة الاتحادية للكهرباء والماء  
ادارة الشؤون المالية

UNITED ARAB EMIRATES  
FEDERAL ELECTRICITY & WATER AUTHORITY  
FINANCE DEPARTMENT



مجموعة / هـ

رقم: 817967

ايصال استلام ايرادات

تقداً / شيك .....  
البنك .....  
التاريخ .....

البيان	البند	الهيئة	الباب
مدرج	للس		
١٠٠٠	٢٢	٩٦.١	٦٣
١٠٠٠		٩٦.١	٦٣

استلمت من .....  
مبلغاً وقدره .....  
وذلك عن .....  
رقم الحساب .....  
رقم الفاتورة .....

مكتب .....  
أمين الصندوق .....

التاريخ: ١٤٢٦/١٠/٢٠

# Board of Directors

Vice Chairman	Mr. George Bajk
Director	Mr. Sobail Iqbal
Director	Mr. Abdul Rahman
Director	Mr. Mahid Ashraf
Director	Mr. N Anjum Beig

## General Manager / Director

Mr. N. Anjum Beig

### Executive Secretary

Ms. Neha Ghai





❑ CO-CURRICULAR ACTIVITIES



WORKERS TOOL BOX MEETING



WORKERS TOOL BOX MEETING



ALUMINIUM WORKERS



PARTICIPATION IN CLEAN UP UAE CAMPAIGN



SEMINAR



GYMNASIUM



TT



GYMNASIUM



WINNERS FOOTBALL TOURNAMENT - 2010



WINNERS FOOTBALL TOURNAMENT - 2011



RUNNER UP FOOTBALL TOURNAMENT



# FujEng

## LOCATION MAP

### LEGEND:

- |          |                            |
|----------|----------------------------|
| <b>H</b> | FUJSENG CORPORATE OFFICE   |
| <b>F</b> | FUJSENG FACILITIES         |
|          | FUJSENG ALUMINUM FACTORY   |
|          | FUJSENG REBAR UNIT         |
|          | FUJSENG CENTRAL WARE HOUSE |
|          | FUJSENG DIVISIONAL OFFICES |







*FujEng*

Building  
dreams

FUJSENG CONSTRUCTION LLC

**Corporate Office**

502-Fujairah Tower  
Hamad Bin Abdullah Road  
P.O.Box 7226  
(UAE)Fujairah  
Tel.: +9719 224 4388  
Fax : +9719 224 4399  
e-mail: fuj seng@emirates.net.ae

**Operations HQ & Factories**

Al Hayl Industrial Area-1  
P.O.Box 7226  
(UAE)Fujairah  
Tel.: +9719 223 9190  
Fax : +9719 223 9193  
e-mail: aluminum@fuj seng.ae